

Summer 2023 Newsletter

Website: www.thearcoffranklinfultoncounties.com

Arc Bingo Social – September 21st, 2023



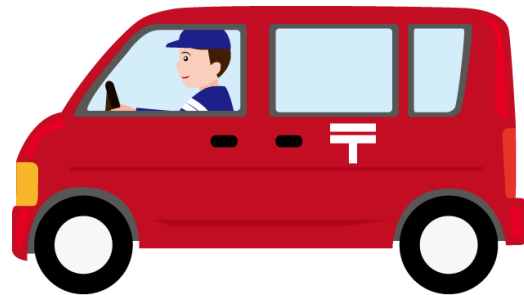
Join The Arc for a fun evening of Bingo at Norlo Park! The Bingo will be held Thursday, September 21st at Norlo Park in Pavilion #2 from 6:30pm-8:00pm. There will be snacks and drinks provided!

The Arc will be providing transportation from the Chambersburg, Greencastle, and Waynesboro areas on a first come, first serve basis. Van seating is limited. Call Lisa at 717-264-4390 Ext. 103 to reserve your spot.

Arc Social Recreation Outings

The Arc's Social Rec program is in full swing! Check out the included Social Rec Calendars to see what activities you want to attend. The Arc provides transportation to the activities for a small group of individuals in each area. Call Lisa at 717-264-4390 ext. 103 to be put on the transportation list. These outings are on a first come first serve basis. **Waiting until the last minute to sign up may hinder your ability to participate.**

The outings are also posted on
www.thearcoffranklinfultoncounties.com
under the "Calendar" tab.
Cancellations will appear there.



Membership

One way to give is through Arc Membership. Please see the attached membership application to join!
All Arc members who join in 2023 will receive a 2023 Arc lapel pin.



*"This facility is funded through a contract with the
Franklin-Fulton County Mental Health/Intellectual Disabilities/Early Intervention"*

*The Arc of Franklin & Fulton Counties is affiliated with the Arc of the United States, The Arc of Pennsylvania,
and other local chapters of The Arc across the country.*



HAPPY BIRTHDAY!

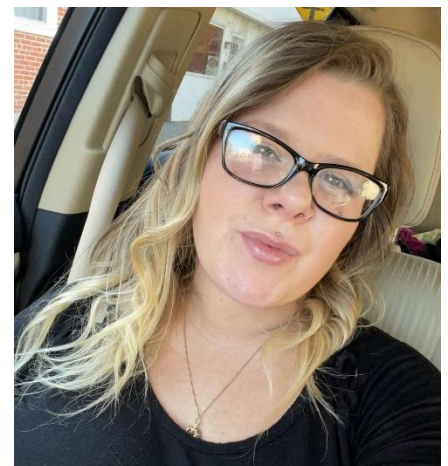
If you would like to have your name added to the birthday list, please contact Katie at 717-264-4390

July		August	September	
Karly D	Audrey F	Sarah W	Steven B	Megan J
Christopher F	Erin P	Vera U	Craig L	Luther M
Stephanie S	Jon O	Shayna M	Carrie H	Bobby D
Paul C	Jeremy J	Clint C	Cristobal L-Z	
Kristen S				



We want to highlight Suzy for our staff spotlight! Suzy has been with the Arc for about 3 years. When asked what her favorite thing about working with The Arc is, Suzy states "it would definitely be seeing the smile/joy on my consumer's faces, whether we are just doing activities around their house or going out and doing their favorite activities in public! I'd have to say my second favorite thing is that I started doing this as a small side gig, but now I've had the opportunity to meet others and make an impact in their lives!" A fun

fact about Suzy is that in her free time, you can find her on the field coaching a local cheerleading team - she is going in to her 7th year as head coach! We are thankful to have Suzy on our team of DSPs.



*"This facility is funded through a contract with the
Franklin-Fulton County Mental Health/Intellectual Disabilities/Early Intervention"*

The Arc of Franklin & Fulton Counties is affiliated with the Arc of the United States, The Arc of Pennsylvania, and other local chapters of The Arc across the country.

Upcoming Community Events

The Arc is not affiliated with these events in any way. We provide minimal information, however, we are not responsible for the events and strongly encourage you to visit the websites provided for up-to-date information.

July 16, 2023 - Mercersburg Food Truck Festival

11:00 AM – 4:00 PM. The festival will be held in the corner lot of Leidy's Custom Woodworking (11427 Church Hill Road). A variety of food trucks and delicious food fare will be available, as well as products from Cold Spring Hollow Distillery. There will also be children's activities taking place and entertainment. Visit www.explorefranklincountypa.com for more information!



July 24-July 29, 2023 – 65th Annual Shippensburg Community Fair

\$5 parking fee. There will be animals, shows, food vendors, and live entertainment. Visit www.shippensburgfair.com for more information!

August 19, 2023 – 12th Annual Ft Loudon Peach Festival



9AM-3PM Free admission and parking! Located at the Fort Loudon Community Center Grounds, 142 Mullen Street Fort Loudon PA 17224. There will be arts/craft vendors, free entertainment for adults and kids, peach pie, peach cobbler, peach sundaes, peach ice cream, and more food vendors/trucks!

August 26, 2023 – 42nd Annual Shippensburg Corn Festival

8am- 4pm in Downtown Shippensburg; King St; Saturday, August 26, 2023. This is a rain or shine event. Visit www.shippensburgcornfestival.net for more information!



September 15 and 16, 2023 – Uprise Festival



Christian music festival at Shippensburg Fairgrounds. \$75 full event ticket – includes fairground access for Friday night and all day Saturday. Visit www.UpriseFest.com for more information!

September 30, 2023 – Fall Faire Festival

The Fall Faire Festival will be held at Greene Township Park on Saturday, September 30, 2023, from 10 AM until 4 PM. The family festival will feature local arts and crafts vendors, food trucks, entertainment, costume contests, face painting, and family fun! Entry to the festival is free.

*"This facility is funded through a contract with the
Franklin-Fulton County Mental Health/Intellectual Disabilities/Early Intervention"*

The Arc of Franklin & Fulton Counties is affiliated with the Arc of the United States, The Arc of Pennsylvania, and other local chapters of The Arc across the country.

July

2023

Social Recreation Outings

Signups: 717-264-4390. Please sign up by 9am on Monday, the week of the event.
Please only sign up for events in your area.

Social Van Cell Phone: 717-524-8936

A call will be made by the aid the day of the event to verify that the individual is still attending the outing. If the aid does not talk to anyone from the household the individual will not attend the outing. Outings are typically from 6pm-8pm. Attendees will need approximately \$20 per person, this is for food, tip, or activity fee. Outings such as bowling, movies, mini-golf, arcades etc. will not have a dinner



Sunday	Monday	Tuesday	Wednesday	Thursday	Friday	Saturday
						11
2	3 Chambersburg: Mini Golf @ Cluggies \$\$ 6:30p -8p	4 Independence Day Office Closed!	5	6 St. Thomas: Little Dipper for Ice Cream \$\$ 6:30p- 8p	7	8 Fulton County: Shopping and out to eat.
9	10 Fayetteville: Dairy Queen 6:30p-8p \$\$	11	12	13 Waynesboro: Twin Kiss 6:30p- 8p \$\$	14	15
16	17	18	19	20	21	22
23	24 Greencastle: Tony's Pizza 6:30p- 8p \$\$	25	26	27 Shippensburg: Goose Brother's Ice Cream 6:30p- 8p \$\$	28	29
30	31					

August

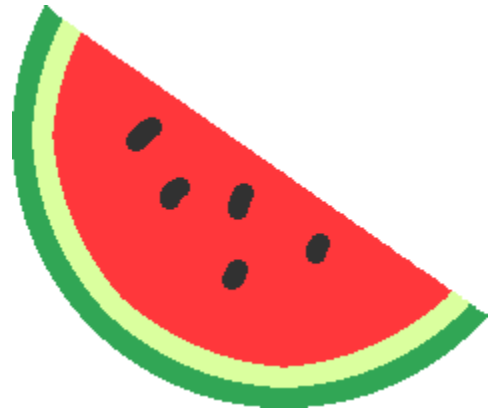
2023

Social Recreation Outings

Signups: 717-264-4390. Please sign up by 9am on Monday, the week of the event.
Please only sign up for events in your area.

Social Van Cell Phone: 717-524-8936

A call will be made by the aid the day of the event to verify that the individual is still attending the outing. If the aid does not talk to anyone from the household the individual will not attend the outing. Outings are typically from 6pm-8pm. Attendees will need approximately \$20 per person, this is for food, tip, or activity fee. Outings such as bowling, movies, mini-golf, arcades etc. will not have a dinner



Sunday	Monday	Tuesday	Wednesday	Thursday	Friday	Saturday
		1	2	3	4	5
6	7 St. Thomas: 30 West Family 6:30p- 8p \$\$	8	9	10 Shippensburg: Cluggy's mini golf 6:30p-8p \$\$	11	12 Fulton County: Peach Festival (if going on)
13	14 Chambersburg: Bruster's Ice Cream 6:30p- 8p \$\$	15	16	17 Waynesboro: Franks Pizza 6:30p	18	19
20	21 Greencastle: Lizzies Ice Cream 6:30p- 8p \$\$	22	23	24 Fayetteville: Dairy Queen 6:30p- 8P \$\$	25	26
27	28	29	30	31		

September

2023

Social Recreation Outings

Signups: 717-264-4390. Please sign up by 9am on Monday, the week of the event.
Please only sign up for events in your area.

Social Van Cell Phone: 717-524-8936

A call will be made by the aid the day of the event to verify that the individual is still attending the outing. If the aid does not talk to anyone from the household the individual will not attend the outing. Outings are typically from 6pm-8pm. Attendees will need approximately \$20 per person, this is for food, tip, or activity fee. Outings such as bowling, movies, mini-golf, arcades etc. will not have a dinner

Have a safe Labor Day



Sunday	Monday	Tuesday	Wednesday	Thursday	Friday	Saturday
					1	2
3	4 Arc Office Closed!	5	6	7 St: Thomas: Little Dipper 6:30p- 8p \$\$	8	9 Fulton County: Get lunch at Sheetz an eat at Cowan Gap
10	11 Greencastle: Pizza Hut 6:30p- 8p \$\$	12	13	14 Shippensburg: Diffy's Diner 6:30p- 8p \$\$	15	16
17	18 Chambersburg: Pat & Carla's 6:30p- 8p	19	20	21 Arc Fall Social Norlo Park Pavilion #2 6:30p- 8p	22	23
24	25 Fayetteville: Shopping at Ollies 6:30p-8p \$\$	26	27	28 Waynsboro: Arturo's Pizza 6:30p-8p \$\$	29	30



The Arc

*For people with intellectual
and developmental disabilities*

The Arc of Franklin-Fulton Counties

2314 Philadelphia Avenue

Chambersburg, PA 17202

(717) 264-4390

www.thearcoffranklinfultoncounties.com

MEMBERSHIP APPLICATION

- ☐ *Consumer Membership - \$10.00 per year*
- ☐ *Individual Membership - \$15.00 per year*
- ☐ *Family Membership* - \$25.00 per year*
- ☐ *Business Membership - \$50.00 per year*
- ☐ *Donation*

- _____
- ☐ *New Membership*
 - ☐ *Renewal Membership*

***Please use this form to pay by check or money order &
make your check payable to The Arc of Franklin-Fulton
Counties. Please mail membership info. to The Arc office.***

Name _____

Address _____

City _____ *State* _____ *Zip Code* _____

Phone _____ *E-Mail* _____

Date of Birth _____

*With a membership at The Arc of Franklin-Fulton Counties you receive great benefits
and support programs. The Arc Membership benefits include:*

- An Arc membership lapel pin*
- Invitation to annual membership dinner*
- Mercer Consumer Protection plans: health, life, accidental & dismemberment*
- Bi-monthly newsletters with highlights, resources and activities*
- Affiliation with the state and national Arc, providing the latest information
impacting individuals with developmental disabilities.*

*Your support makes The Arc's powerful voice even stronger as we address issues such as
education, employment, housing, and safety that are critical to the disability community.*

*Becoming a member at The Arc adds to our community, helping us to spread the
word, support and strengthen those with developmental disabilities!*

**Family Membership includes parents and children under age of 18*

Office Use Only

Date Paid: _____

Check #: _____

In Computer: _____

Amount Paid: _____

Thank you for Supporting The Arc!

